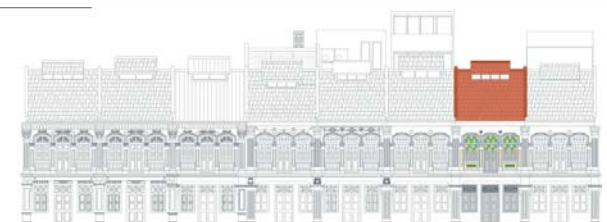
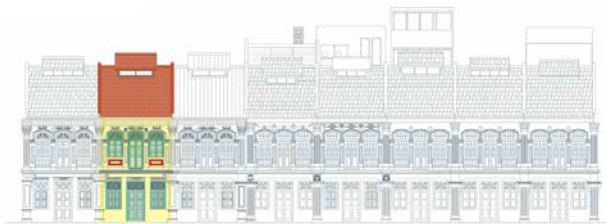
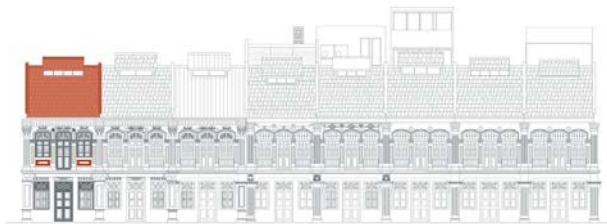




THE LORONG 24A SHOPHOUSE SERIES



UNIT 5
Atria Architects

UNIT 9
Liu & Wo Architects

UNIT 11
Linghao Architects

UNIT 13
HYLA Architects

UNIT 15
Lekker Design

UNIT 17
Zarch Collaboratives

UNIT 19
HYLA Architects

UNIT 21
FARM & KD Architects



THE
LORONG 24A
SHOPHOUSE
SERIES

01 OVERVIEW

The Lorong 24A Shophouse Series

Conservation with a Difference

Design commencement: 2010, Year of completion: 2012.



THE
LORONG 24A
SHOPHOUSE
SERIES

What Is This Project - The Lorong 24a Shophouse series represents a novel art- and design-led approach to conservation and place-making in Singapore.

The project revolves around 8 conservation shophouses along Lorong 24A Geylang, owned by a single client consortium. The idea was to invite 8 local architects and designers to produce 8 unique concepts with a common brief. The shophouses would be rented out and regular events would be held in the various shophouses to help activate the street, and bring another point of view to Geylang, a renowned red-light district in Singapore.

Pocket Projects was appointed as the creative development consultant for the project. The involvement started from the initial conceptualisation, search and selection of the 8 architects and designers, working closely with the appointed architects on the various projects, subsequent tenant selection to curating events, programming and events planning. This strategic long term involvement in the place-making process was necessary to ensure consistency in terms of the outcome, which often becomes experiential and accumulates from finding the right designers, the selection of the right tenant profiles and down to event management.

In contrast to conventional “top-down” urban planning projects, this scheme is built around a collection of architectural approaches to conservation--in effect, eight complementary proposals for the shophouse. 8 architects and designers took on the challenge and translated this idea into reality. Each shaping their own shophouse according to their interpretation of the common brief. This resulted in an exciting showcase of possibilities where atypical spaces and imagination meets the narrow typology of a shophouse. These homes have been designed to accommodate a shared interest in visual arts, design and media, as a basis for community-building among neighbours. Each unique design attracts its own occupant but as a cluster with common interests in design and the edginess, they form a small but dynamic core, revitalizing the street through open houses, art exhibitions, and social activities to engage longtime residents of the Geylang district as well as others from further afield.

What Has Happened So Far.

To date 14 events have been held at the project, including student shows, local artist exhibitions, talks, architecture tours, pop-up dinners. The project has reached out to a variety of groups including students, design professionals, tourists, local residents and interested public. Some of which have discovered their influence on the urban fabric, and others who have voiced their support for good architecture. Apart from the restoration work to the shophouses, the new designs have added value and interest to them, by catering to contemporary living needs and offering a strong design attraction.

The Future is Promising and Always Evolving.

The project continues to evolve. A different energy has been brought to the street. We hope that the ideas will be contagious and spread to other parts of Singapore. A kind of micro-neighborhood has been started as a result of a design-driven initiative. Recognition of this approach will acknowledge the achievements through design practice and hopefully inspire other collectives or groups to seek out their own neighbourhoods to make a difference.

APPENDIX - LIST OF EVENTS HELD AT THE LORONG 24A SHOPHOUSE SERIES

	Venue	Event & Description	Dates
01	Unit 9	The Lady and the Dragon - solo art show by local French artist	April 2012
02	Unit 11	The Art of Rebellion - group art show by local young artists and pop-up store	April 2012
03	Unit 17	Urbanature - National University of Singapore Architecture Year 1 exhibition	April 2012
04	Unit 17	Aligning - single artwork by local artist Tang Ling Nah	April 2012
05	Unit 9	Bombay Sapphire - 'World's Most Imaginative bartender 2012' private event	May 2012
06	Unit 21	Occupations - National University of Singapore Architecture Year 2 exhibition	June 2012
07	Unit 15	Rock Dreams - solo show by local rock music photographer	July 2012
08	Unit 15	CuratingLab: Curatorial Roundtable 02 - public talk series by NUS Museum	August 2012
09	Unit 13	Acoustic Anarchy - solo art show by local urban artist	September 2012
10	Various	World Architecture Festival 2012 - Architectural Tours	October 2012
11	Various	Singapore ArchiFest '12 - Architectural Tours	October 2012
12	Unit 19	Alexandre Mischan - solo private show by US artist, hosted by unit 19 tenants	September 2012
13	Unit 5	Hat of Cain launch - launch party of panamam hat boutique	February 2013
14	Unit 17	Rightclicka - Private party	April 2013
15	Unit 17	Alice in Asylum - Pop-up secret dinner and bar experience	April 2013



THE
LORONG 24A
SHOPHOUSE
SERIES

02 SITE

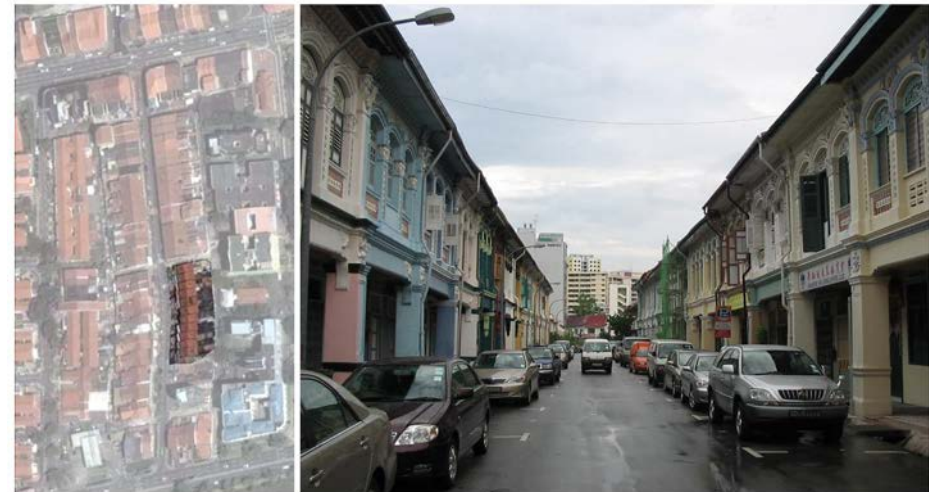
The Lorong 24A Shophouse Series Conservation with a Difference

Design commencement: 2010, Year of completion: 2012.

The Project is located in Geylang, a secondary settlement conservation zone. By the early 1900s, Geylang, originally covered by plantations and fields, was transformed into an urbanized area with rows of mainly 2-to 3-storey shophouses.

Built in the 1920s, the shophouses along Lorong 24A are characterized by rich detailing such as glazed porcelain tiles, motifs, intricate base relief mouldings and stained glass windows. Many of them are also brightly coloured, with each unit having a distinctive colour combination. All these are characteristic of the Chinese Baroque shophouse typology, in which the extensive ornamentation, is pre-dominant in the early 1900s.

In contrast to the adjacent streets, Lorong 24A has not had a history of red-light activity. It is instead home to an eclectic myriad of old and new small business, ranging from a traditional Chinese medicine shop (a family home spanning three generations, replete with shop cat and antique medicine cabinetry) to a flamenco dance studio. The street also houses a number of old Chinese clan associations, as well as a Buddhist library. The Project attempts to highlight Lorong 24A as an oft-overlooked pocket of quirky charm and old-world calm amidst the rest of Geylang, an area typically associated with red-light activity and immigrant workers dormitories. It hopes to draw attention to the charming eccentricities and historical richness of the street.



satellite view of lorong 24a geylang

street view of conservation shophouses along lorong 24a geylang





THE
LORONG 24A
SHOPHOUSE
SERIES

03 EXISTING SHOPHOUSES

The Lorong 24A Shophouse Series Conservation with a Difference

Design commencement: 2010, Year of completion: 2012.



THE
LORONG 24A
SHOPHOUSE
SERIES

The existing shophouses were 2-storied and shared similar configurations. Common features would include the five-foot way, open rear court, a quarter-turn staircase located in the centre of the house. The ground floor of each shophouse comprised an entrance hall and private living space behind the central staircase on the ground floor, with the kitchen and bathrooms located in the rear, while the second floor was divided into 2 bedrooms. The central wall spanning the breadth of each unit, separating the external kitchen area from the internal living area, greatly reduced the amount of light entering the central interiors. The traditional central airwells were also absent.

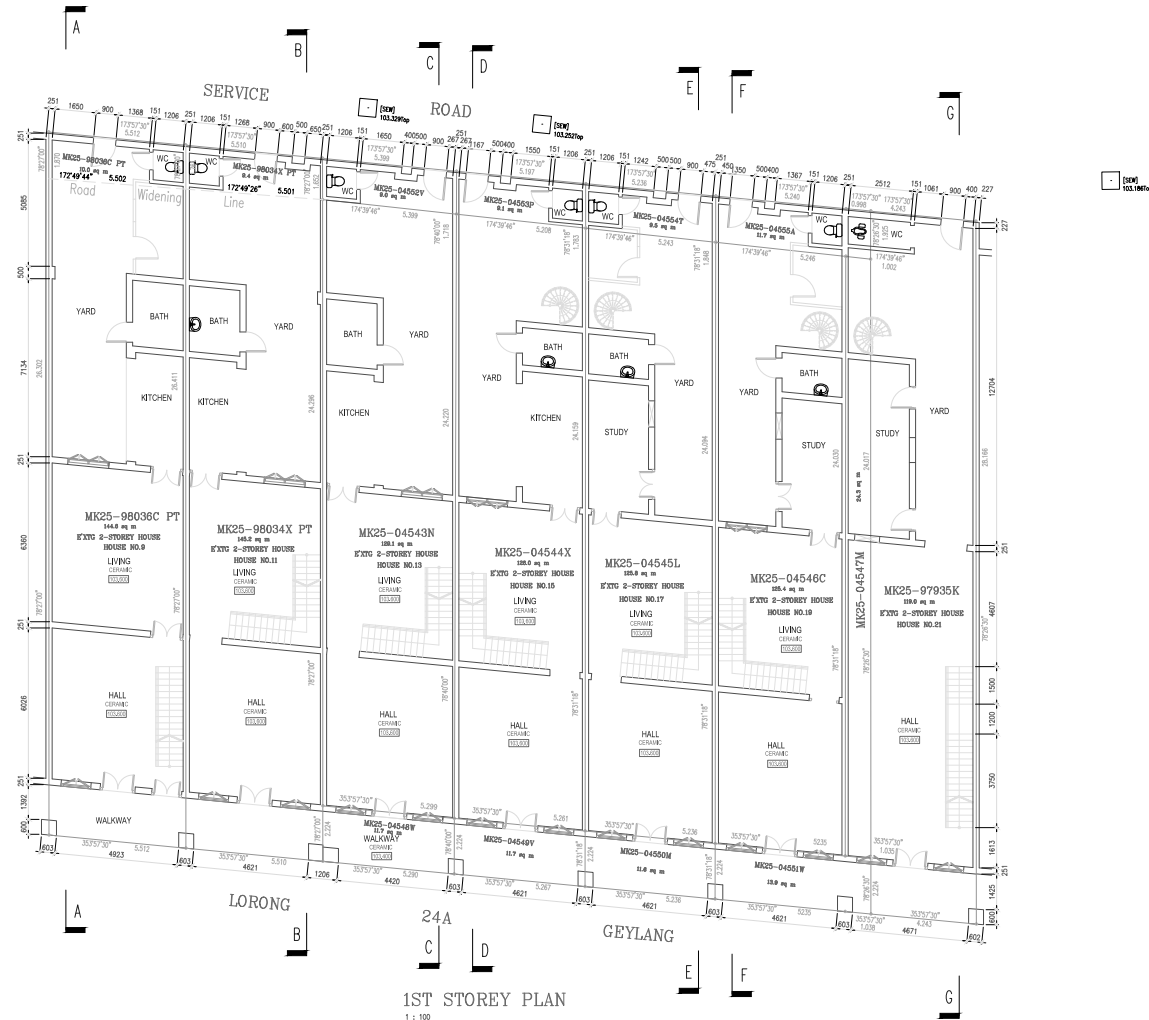
The following represents the typical plan of the original shophouses.





THE LORONG 24A SHOPHOUSE SERIES

> measured drawings
1st storey





THE
LORONG 24A
SHOPHOUSE
SERIES

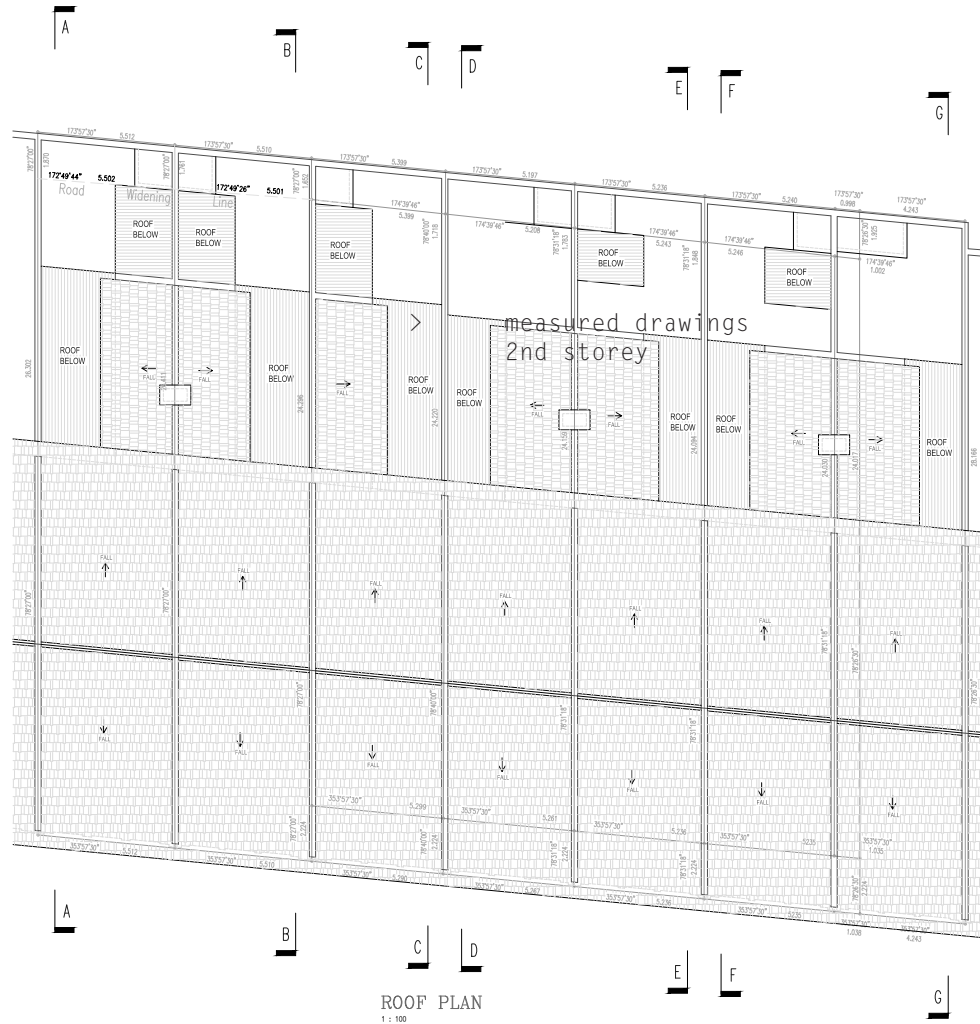
> measured drawings
2nd storey





THE
LORONG 24A
SHOPHOUSE
SERIES

> measured drawings
roof





THE
LORONG 24A
SHOPHOUSE
SERIES

> typical features



> front facade



> rear court & kitchen area



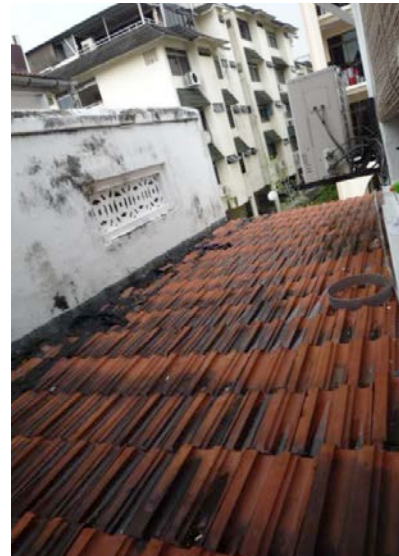
> five-foot way



> second floor bedroom



> entrance hall



> Existing roof tiles over rear yard and ventilation blocks



THE
LORONG 24A
SHOPHOUSE
SERIES

04 CONCEPT & DESIGN APPROACH

The Lorong 24A Shophouse Series

Conservation with a Difference

Design commencement: 2010, Year of completion: 2012.



THE
LORONG 24A
SHOPHOUSE
SERIES

Concept - Exploration of the Shophouse

8 local architects were invited to produce 8 unique design solutions to bringing natural light, ventilation, and greenery into the narrow shophouse typology, while respecting the original shophouse qualities by conserving key heritage elements. The front half of the existing residential conservation building is maintained while allowing a new rear insertion.

The overall project concept was to introduce diversity and contrast - behind each similar conservation façade lies a completely different spatial experience of a shophouse. The emphasis on contrast allows the project to sit comfortably alongside its existing neighbours such as an original traditional shophouse (unit 7, wedged between the units 5 and 9 of the project) owned by a Chinese medicine shop family, which offers an interesting counterpoint to the new re-imagined units.

The units accommodate a variety of tenant configurations: from couples, to families, to several housemates. Potential uses include shared home-offices with ground floor communal spaces, and the option to open the ground floor for exhibitions, blurring public and private boundaries.

It was hoped that the project could highlight the neighbourhood's rich cultural and local architectural heritage.

Design Approach

Across the Project, careful consideration was given to the restoration process, adhering to the 3R principle of Maximum Retention, Sensitive Restoration and Careful Repair.

Maximum Retention:

Elements deemed to be in acceptable condition were retained and made good. These include:

- Shophouse façade, decorative features, tiles
- Existing fanlights, windows, doors, vents
- Existing peepholes above five-foot way (where found)
- Existing floors and floor heights
- Existing roof, timber structure and old tiles
- Existing timber floorboards and joists
- Preservation of breezeblocks, old brickwork

Sensitive Restoration:

- Attempt by some to procure similar timber floorboards (eg. some were purchased off an old kelong)
- The profile, pitch, height of the existing roof is retained
- Careful introduction of a jack roof, to enhance entry of natural light

Careful Repair:

- All existing elements to be retained were carefully repaired and restored



THE
LORONG 24A
SHOPHOUSE
SERIES



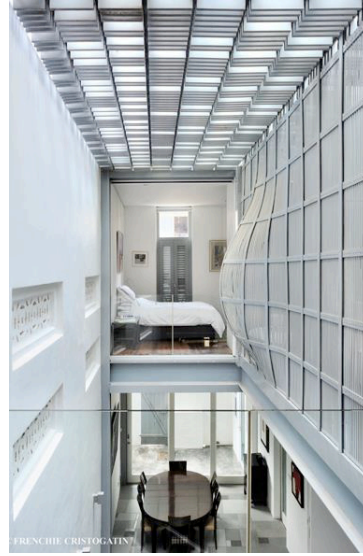
> Existing false ceilings were removed to reveal existing timber joists



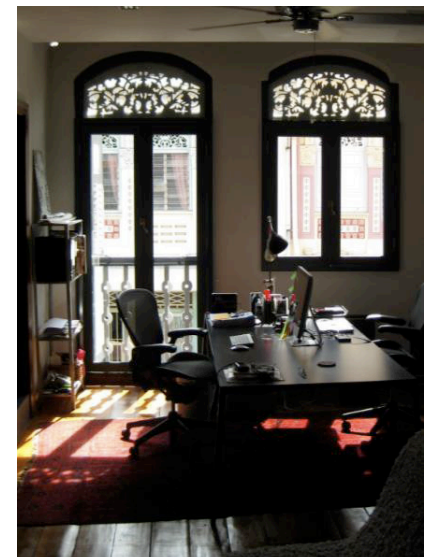
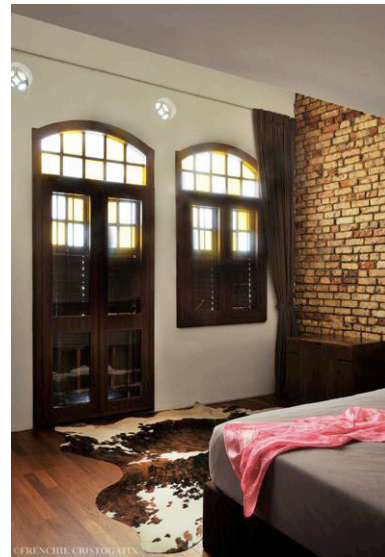
> Existing plaster was removed to expose the old brickwork



THE
LORONG 24A
SHOPHOUSE
SERIES



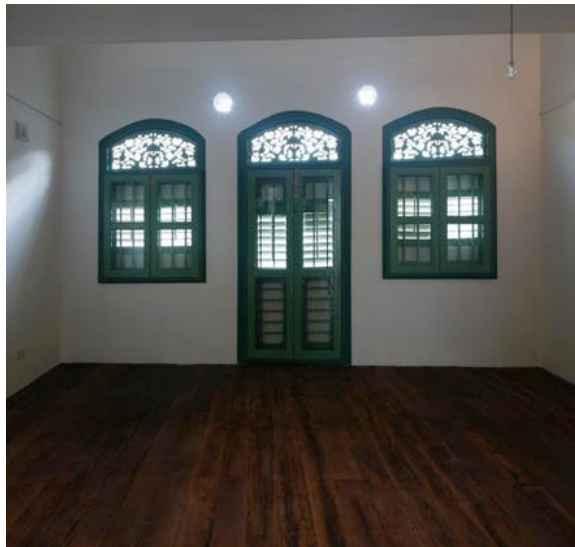
> Ventilator blocks which were covered up were revealed and painstakingly restored



> Shophouse facades were restored and preserved, including decorative features (eg. fanlights, stained glass panels, bas-relief)



THE
LORONG 24A
SHOPHOUSE
SERIES



> Salvage and re-use of existing timber floorboards and old tiles



THE
LORONG 24A
SHOPHOUSE
SERIES

Enhancing the Old with Introduction of the New:

The front half of the existing conservation shophouse is maintained while allowing a new insertion in the rear half. Key design features and solutions have been introduced across the Project to enhance existing spatial quality. These include:

- Re-introduction of lightwells / airwells, and other design innovations to increase natural light and ventilation
- Alternatives to the existing quarter-turn central staircase
- Introduction of jack-roof to existing front roof
- Integration of greenery (eg. pocket gardens, planters)
- Introduction of roof terraces

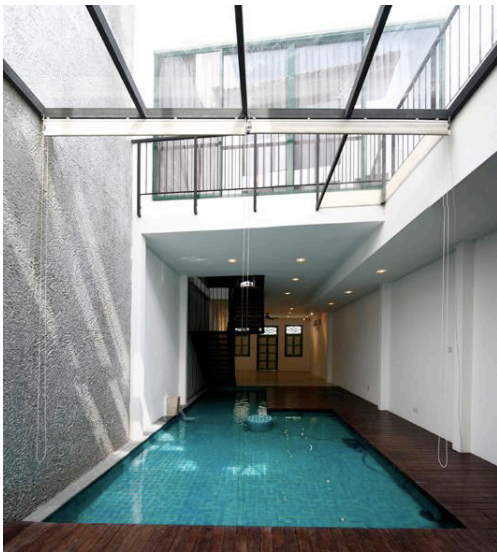
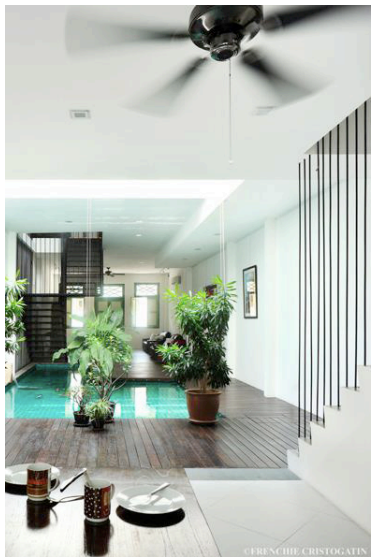


THE
LORONG 24A
SHOPHOUSE
SERIES



- 1) Re-introduction of lightwells and airwells, both open-air and sheltered

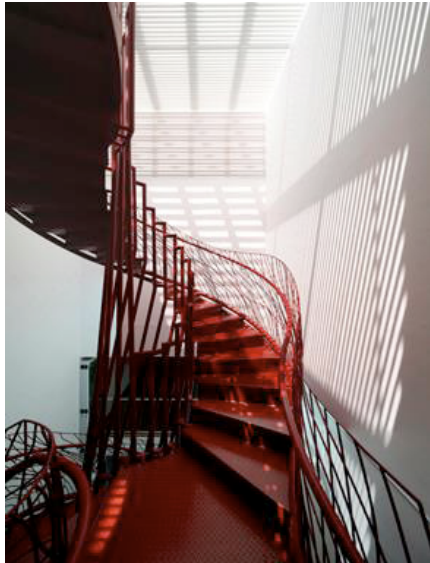
> A central open-air courtyard in Unit 11 allows for increased natural ventilation and daylight.



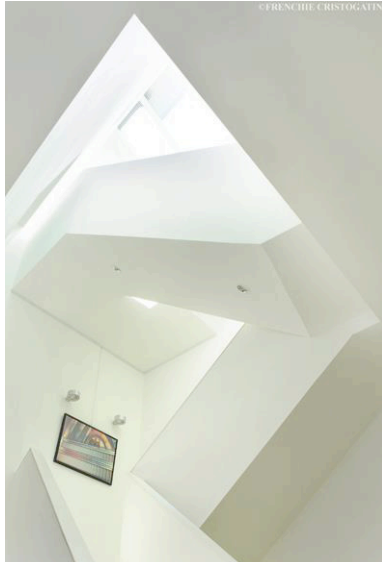
> A central airwell above the pond in Unit 9 floods the entire length of the ground floor with natural light, and facilitates air circulation through the shophouse, exerting a cooling effect.



THE
LORONG 24A
SHOPHOUSE
SERIES



- > A glass-covered, 3-storey lightwell in Unit 13 allows abundant daylight into bedrooms and common spaces on all floors.



- > A glass-covered lightwell framed by a central sculptural staircase in Unit 15 takes diffused sunlight down to the ground floor.



- > An open airwell in unit 19 introduces light into the adjacent bedrooms, kitchen and living areas



THE
LORONG 24A
SHOPHOUSE
SERIES

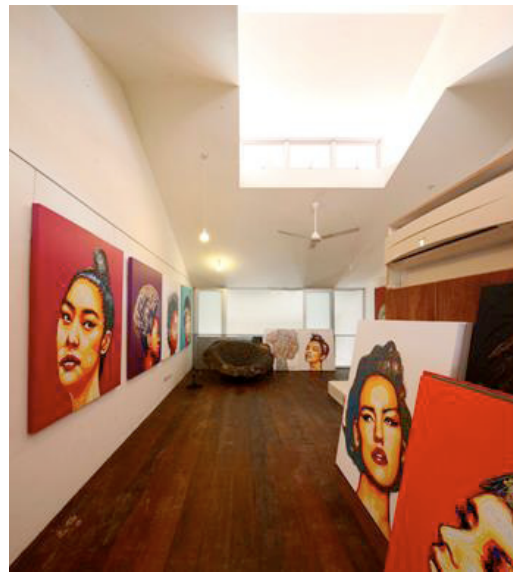


- 2) Other design innovations facilitating the introduction natural light
- 3) Introduction of Jack Roofs

> A system of terraces and clear and frosted glass sliding panels replace opaque bedroom walls in the rear half of Unit 11. Users have the flexibility of allowing natural light and breeze into the rooms by customizing their arrangement of the panels.



> A skewed 3 storey block in the rear results in pockets of sunlight into the living room



> Jack roofs were introduced to the existing front roofs of each unit.





THE
LORONG 24A
SHOPHOUSE
SERIES



4) Integration of greenery and roof terraces



> “Hanging garden” planters in Unit 11, pocket gardens in Unit 15, roof terraces in Unit 21 and Unit 17



THE
LORONG 24A
SHOPHOUSE
SERIES

05 RE-IMAGINED SHOPHOUSES

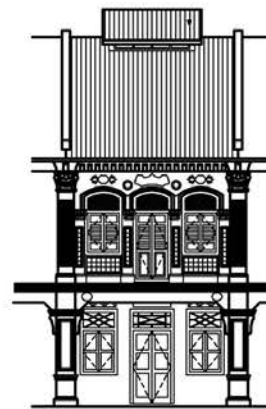
PLANS AND DRAWINGS



1ST STOREY PLAN 2ND STOREY PLAN ROOF PLAN



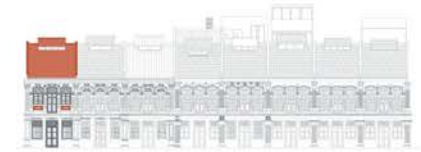
MAIN SECTION



FRONT ELEVATION



NO. 5



ATRIA ARCHITECTS

The first in the series of the shophouse series, Unit 5 was intended as a test-project to gauge marketability of the development in the notoriously seedy district. With an extremely tight budget, the focus was on updating the shorhouse with minimal structural intervention, yet with a sensitivity to the comfort of everyday living. The architects strove to use as much of the existing material as possible, with a emphasis on practicality.

It proved to be a successful test project as this humble paved the way for the subsequent more daring developments. A comfortable and liveable space, there are no pretences in a space that offers comfort without the excess, a sanctuary in its own right in an eclectic neighbourhood.

IN USE: TALENTS & TENANCIES

TENANCY: Expatriate family with kids and dog

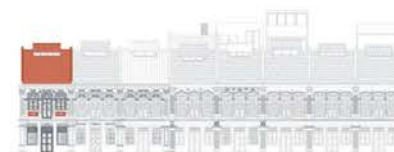


Hat of Cain Launch - launch party of panama hat boutique

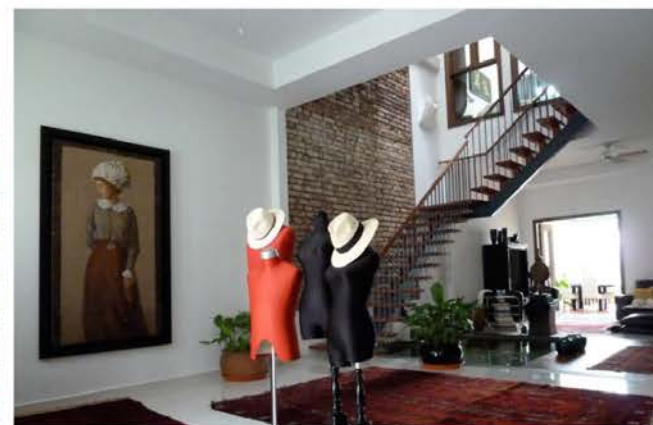
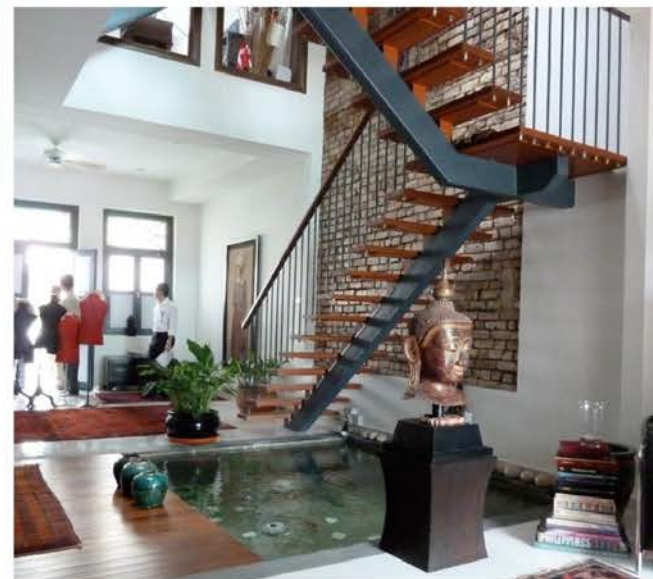


THE LORONG 24A SHOPHOUSE SERIES

NO. 5

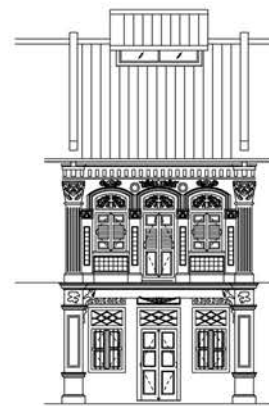
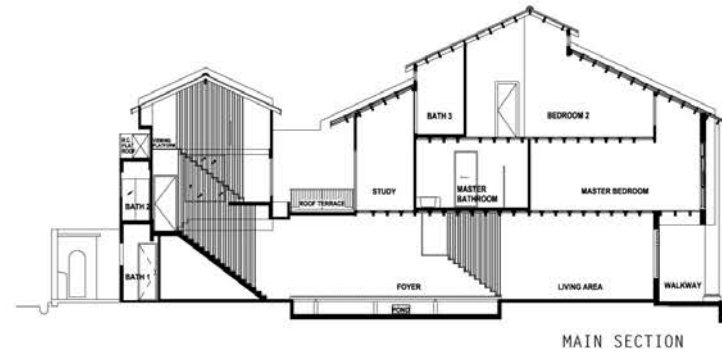
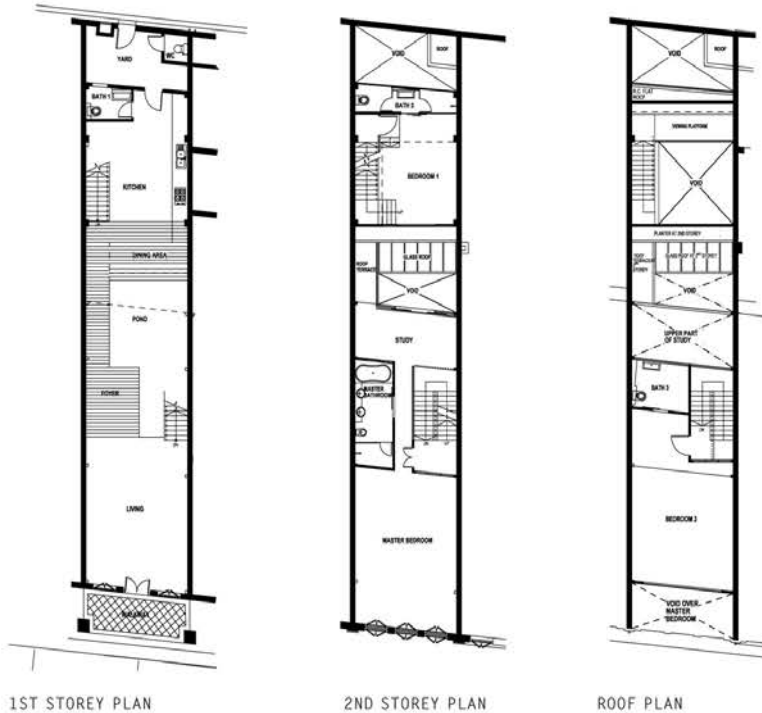
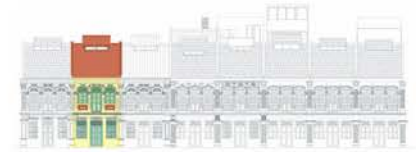


ATRIA ARCHITECTS



FROM LEFT:

- 1 Staircase that descends into water in internal court
- 2 View of staircase and pool of water
- 3 View of staircase from entrance
- 4 View of backyard cum kitchen
- 5 Staircase 'floating' above pool



LIU & WO ARCHITECTS

Adopting the approach of removing rather than adding, No.9 was an exercise in exposing the internal structure of the space rather than concealing it - the few additions by the architects are sheer and transparent, elusive and ethereal.

A key feature of the space is the central staircase suspended above the shallow pond on the ground floor. It was designed to spring slightly when one places weight on it, inspiring a sense of exhilaration and buoyancy in the visitor. The pond it descends into is partially open to the sky, the reflective water bringing in the sunlight, rain and fresh air.

The simplicity in the architects' interventions belie a hint of childlike mischief in the experience of the space, where elegance is tempered with the unexpected.

IN USE: TALENTS & TENANCIES

TENANCY: Three expatriate young working adults sharing a home



The Lady and the Dragon - solo art show by local French artist

Bombay Sapphire - "World's Most Imaginative Bartender 2012" private event

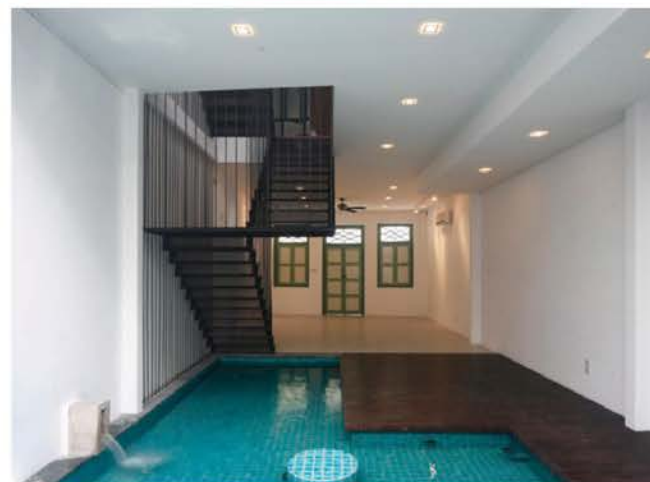
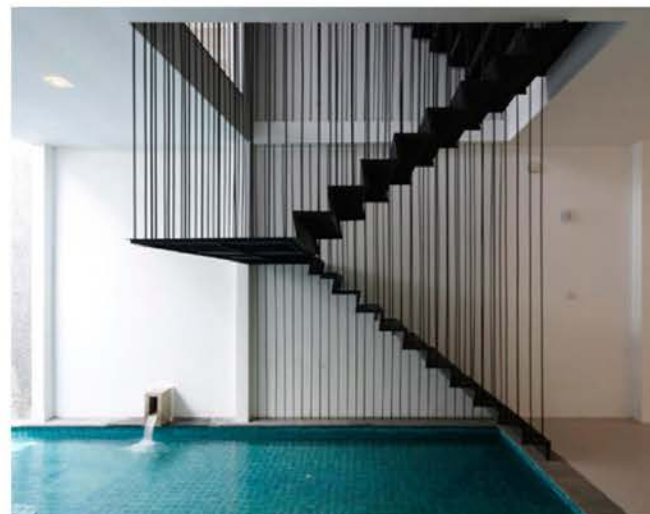
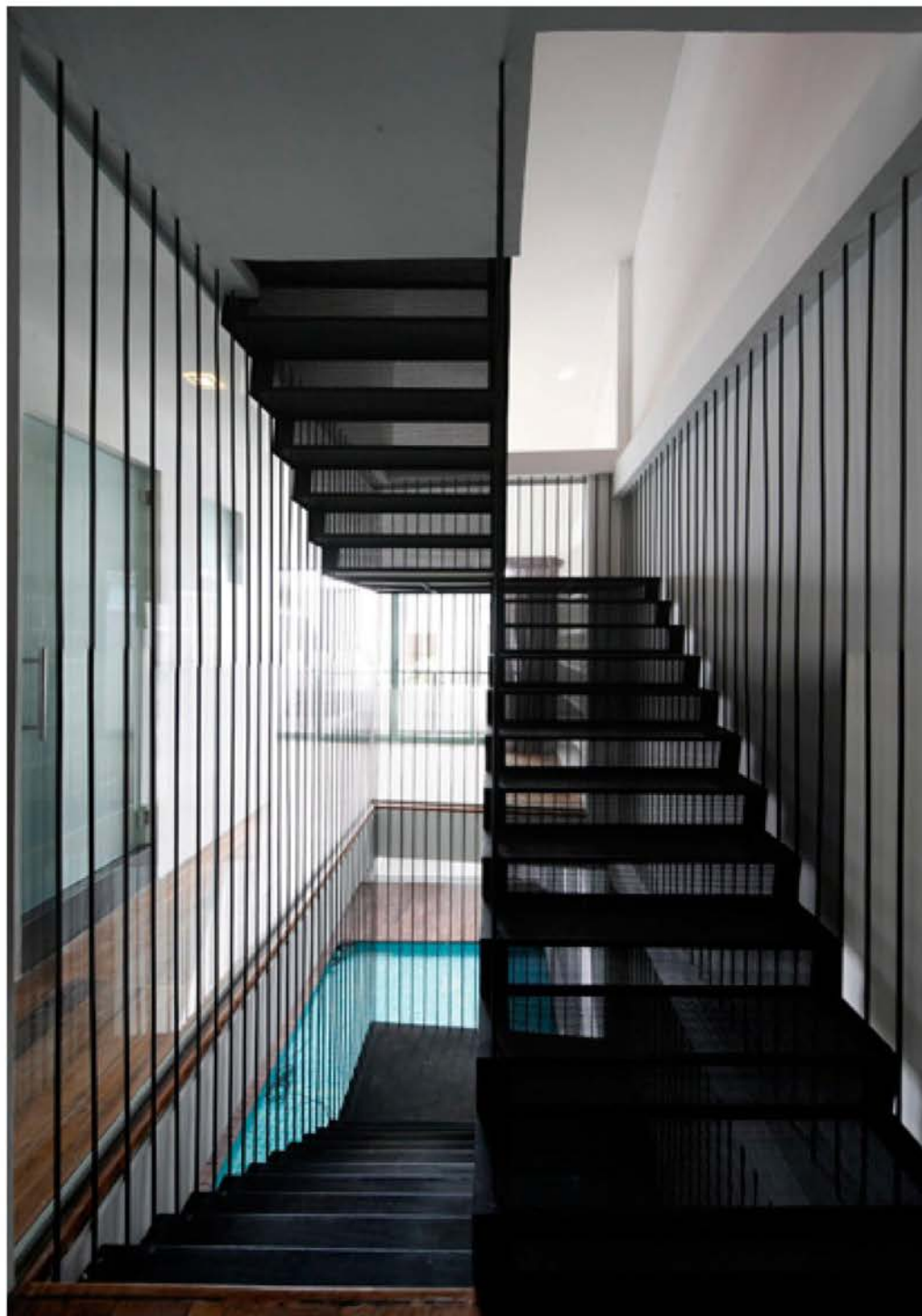


THE
LORONG 24A
SHOPHOUSE
SERIES

NO.9



LIU & WO ARCHITECTS

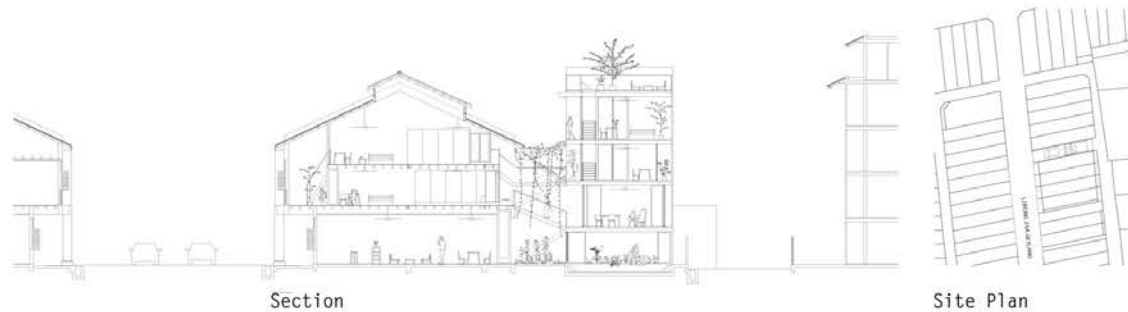
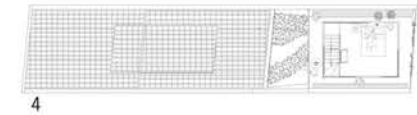
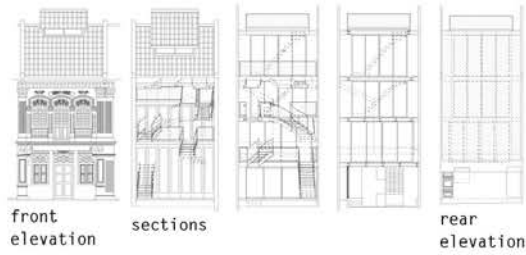


FROM LEFT:

- 1 Perforated staircase bright with views of rooms
- 2 Staircase suspended above shallow pond
- 3 View from back of house
- 4 Balance of glazed surfaces and sheer screens
- 5 Internal airwell with pond that collects rainwater

PLANS AND DRAWINGS

MODEL



THE
LORONG 24A
SHOPHOUSE
SERIES

NO.11



LINGHAOARCHITECTS

A 2 storey terrace 1920s' shophouse is changed to a 5 level house with the floor space doubled to 4000sqft. A compact experience was planned where the interior would be open to the other parts and to the surrounding environment. The house is made into a series of staggered levels with paths connecting them through hanging gardens and terraces with views and glimpses of the house, city and skies as you go about. The generous proportions of the front block are maintained as a big hall and rooms. A terrace facing the street is made on the 2nd level and links to a new mezzanine under the existing pitch roof. The rear is an extension of rooms of sliding glass doors with little terraces all around them. In between is an open courtyard where stairways bend here and curve there allowing for a meandering stroll along the different levels of the house.

We imagine the house filled with the sounds and activities of the family and city. In the morning, the eastern sun would enter into the interior via the side terraces on the rear block while the streets slowly stir to life. Midday, the sun would be overhead and enter into the courtyard and stairs. The old shophouse spaces would be shadowy while the rear of glass doors rooms would be relatively bright with light falling around the terraces on each level. Opening up all the doors, you would enjoy the gentle breeze and the hanging wedelia plants rustling on a windy day. In the evening, as you climb up the house, the view of the undulating roofscape of Geylang and beyond would merge with the orange grey sky of the setting sun.

IN USE: TALENTS & TENANCIES

TENANCY: Expatriate young couple



The Art of Rebellion- group art show by local young artists and pop-up store

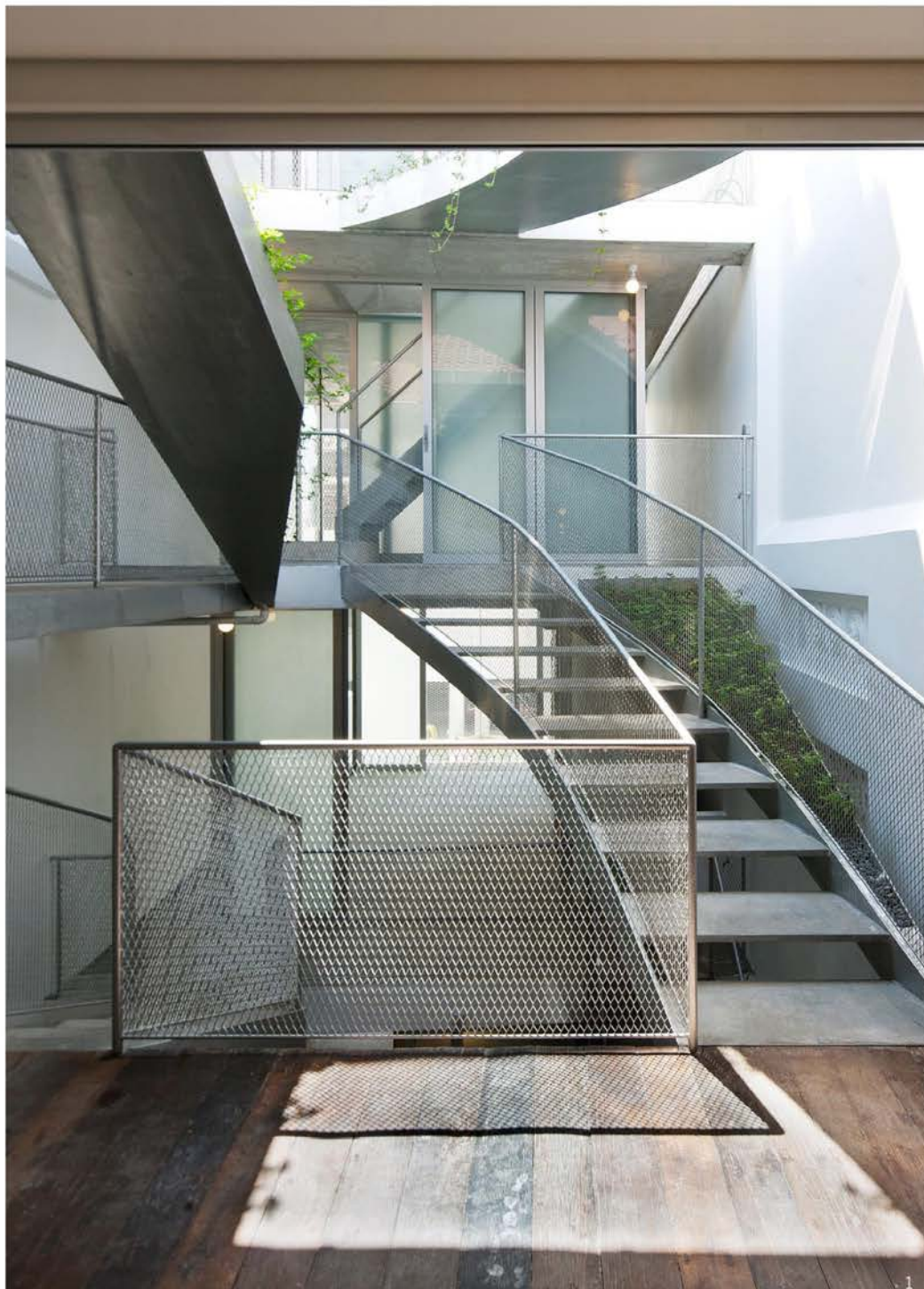


THE
LORONG 24A
SHOPHOUSE
SERIES

NO. 11



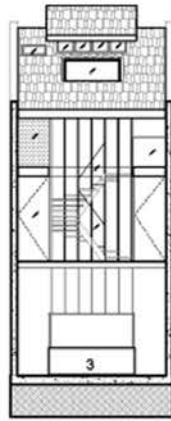
LINGHAOARCHITECTS



FROM LEFT:

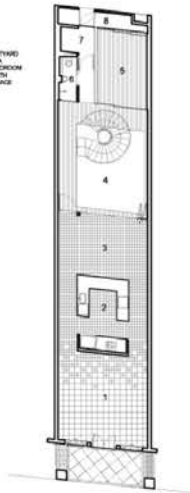
- 1 View from of stairs around courtyard
- 2 View from backlane
- 3 Roof tops and hanging gardens
- 4 Path on 3rd storey
- 5 View from stairwell of 1st storey hall
- 6 Narrow terrace around bedroom

PLANS AND DRAWINGS



- 1. LIVING
- 2. KITCHEN
- 3. DINING
- 4. POND
- 5. BEDROOM
- 6. BATH
- 7. UTILITY
- 8. REAR COURTYARD
- 9. FAMILY AREA
- 10. MASTER BEDROOM
- 11. MASTER BATH
- 12. ROOF TERRACE

- 1. LIVING
- 2. KITCHEN
- 3. DINING
- 4. POND
- 5. BEDROOM
- 6. BATH
- 7. UTILITY
- 8. REAR COURTYARD
- 9. FAMILY AREA
- 10. MASTER BEDROOM
- 11. MASTER BATH
- 12. ROOF TERRACE



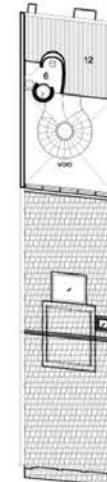
1ST STOREY



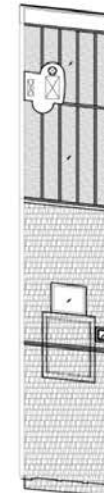
2ND STOREY



3RD STOREY



4TH STOREY



ROOF



FRONT ELEVATION



REAR ELEVATION



NO.13



HYLA ARCHITECTS

13 Geylang is a shophouse conservation and extension project. Within the existing main building, a vertical trellised volume is introduced which creates a connecting feature. A steel staircase is placed within the volume and a skylight introduced above. This creates a dramatic effect as light penetrates down through to the kitchen on the 1st storey, the master bath and the bedroom on the new mezzanine level. The 1st storey living uses an open plan, creating a smooth transition from the living to the dining room, partitioned by the island kitchen. The space connects one through the entire length of the shophouse with a view of the courtyard and the extension behind.

CONCEPT

Zen-esque oasis where clean lines meet a muted palette of whites and greys against the heavy, sensual curves of the red dragon-esque steel spiral staircase above the pond, in the void of the light well.

SECTION

An island kitchen divides the living room and dining room. The latter is sited next to the pond, where diners can enjoy contemplative views of the water, making for an ideal entertainment space.

IN USE: TALENTS & TENANCIES

TENANCY: Expatriate family with young kids and dogs



Acoustic Anarchy - solo art show by local urban artist



THE
LORONG 24A
SHOPHOUSE
SERIES

NO.13

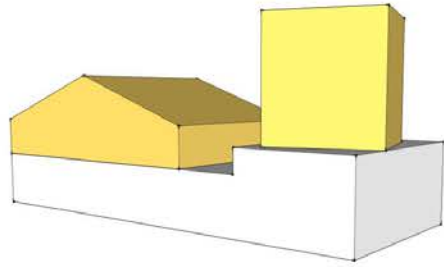


HYLA ARCHITECTS

FROM LEFT:

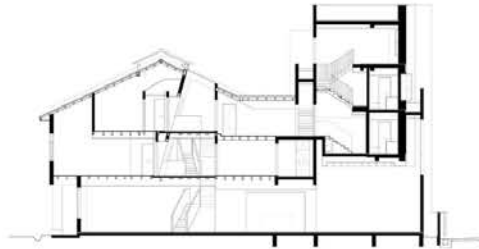
- 1 View of main steel spiral staircase above pond.
- 2 Attic Terrace.
- 3 View of steel spiral staircase from Bedroom.
- 4 View of Dry Kitchen from Living.
- 5 View of suspended steel spiral staircase on 2nd and attic floor.
- 6 Main spiral staircase.
- 7 View of angular steel spiral staircase from 2nd floor.
- 8 View of suspended steel spiral staircase and kitchen.

PLANS AND DRAWINGS



CONCEPT DIAGRAM

The project diagram proposed to the client was about the relationship between home (yellow) and hybrid/ gallery spaces (white).



SECTION A-A

The goal of the project is clear in the longitudinal section, where the new block of bedrooms is seen "hovering" above the main gallery floor.



MODELS

Special attention was paid to "pocket gardens" which would allow light and greenery within the depth of the house.

1ST STOREY



2ND STOREY



3RD STOREY



4TH STOREY



5TH STOREY



ROOF



1. Living/ foyer
2. Main stair
3. Power room
4. Kitchen
5. Large gallery
6. Master bedroom
7. Bathroom
8. Bedroom
9. Bathroom
10. Bedroom
11. Bathroom
12. Store
13. Bedroom
14. Bathroom
15. Bedroom
16. Study
17. Roof Deck



THE
LORONG 24A
SHOHOUSE
SERIES

NO.15



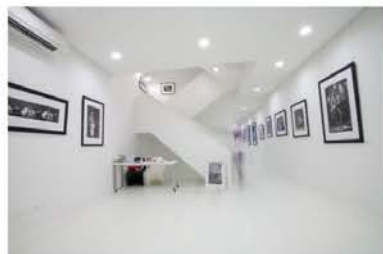
LEKKER DESIGN

The intention of unit 15 was to examine, again, the possible relationship between the home and the art gallery as a hybrid condition.

Rather than a "white box" to live in, or a conventional portrait gallery, this house attempted to find a middle ground, an interdependence of living and display spaces. Ideally, one would always be present within the visual field of the other. Here, the elements of the building (stairs, rooms, gardens) took on an explicitly abstract, sculptural quality, a compromise between house and art.

IN USE: TALENTS & TENANCIES

TENANCY: Expatriate couple



Rock Dreams - solo show by local rock music photographer



CuratingLab: Curatorial Roundtable 02 - Public talk series by NUS Museum



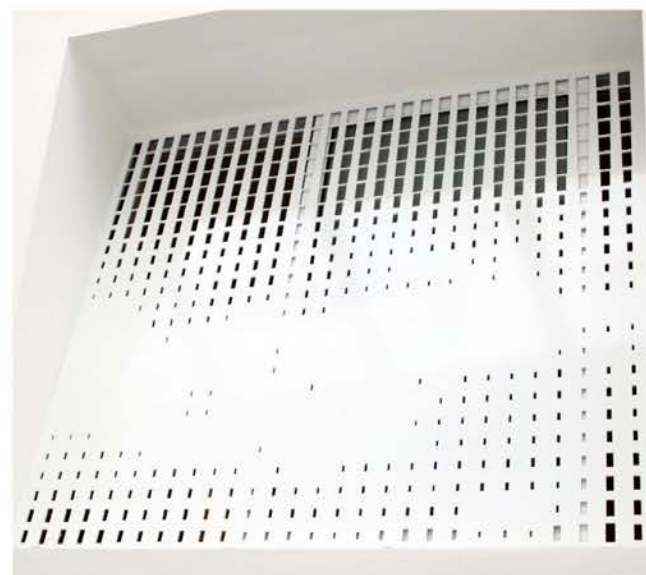


THE
LORONG 24A
SHOPHOUSE
SERIES

NO.15



LEKKER DESIGN



FROM LEFT:

- 1 Main gallery
- 2 Window screen
- 3 Central stair
- 4 Gallery entrance
- 5 View to Lorong

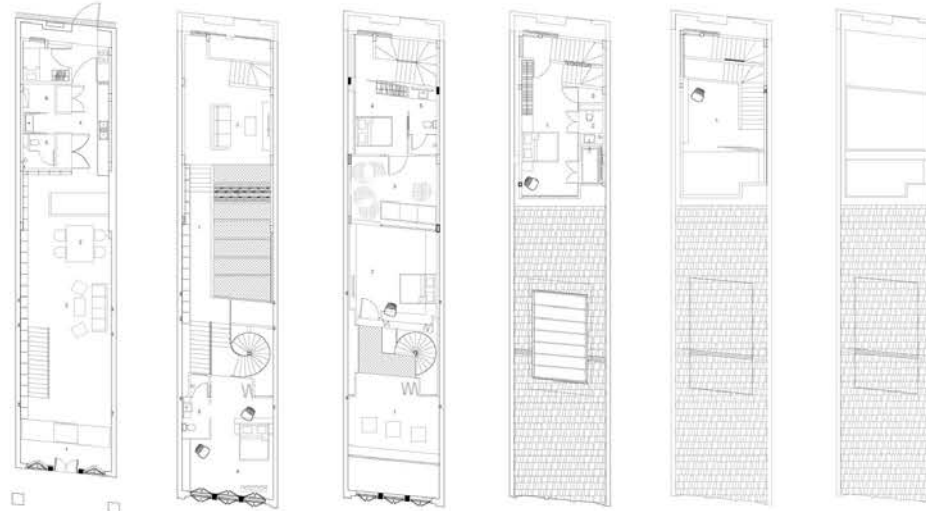
PLANS AND DRAWINGS

1ST STOREY PLAN 2ND STOREY PLAN 3RD STOREY PLAN 4TH STOREY PLAN MEZZANINE PLAN ROOF PLAN



CONCEPT DIAGRAM

New building interacts with the old shophouse. Continuous series of spaces that runs through to the back.



- 1 ENTRY FOYER
- 2 LIVING ROOM
- 3 DINING ROOM
- 4 KITCHEN
- 5 POWDER ROOM
- 6 STORE ROOM
- 7 MAID'S ROOM

- 1 PLATFORM BRIDGE
- 2 DAY ROOM
- 3 LIVING ROOM 2
- 4 BEDROOM 1
- 5 BATHROOM 1

- 1 MEDITATION ROOM
- 2 BEDROOM 2
- 3 DRY SCOPE
- 4 BEDROOM 3
- 5 BATHROOM 3

- 1 MASTER BEDROOM
- 2 MASTER BATHROOM
- 3 STORE

- 1 MEZZANINE



PERSPECTIVE: FOYER

The first floor houses public functions. A spiral staircase extends to the topmost floor provides re-orientation along vertical axis.

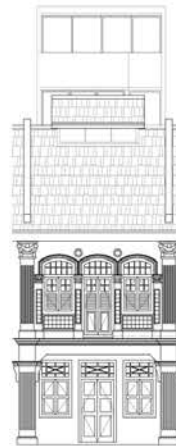


PERSPECTIVE: KITCHEN

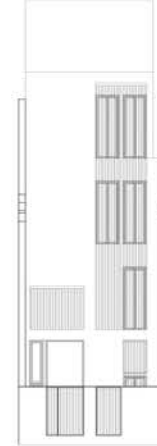


PERSPECTIVE: LIVING ROOM

FRONT ELEVATION



BACK ELEVATION



NO.17



THE LORONG 24A SHOPHOUSE SERIES



ZARCH COLLABORATIVES

The unique scale of the shophouse is revealed in depth and height, with the continuous series of spaces extending inwards longitudinally and the spiral staircase which draws the eye up along the vertical axis. A bridge extends from the staircase, leading one into the new wing. Characterised by a composition of stacked boxes, with slight variations in scale and juxtaposition, a sheltered terrace and a double volume space is inserted, breaking down the threshold between the interior and exterior and establishing a visual connectivity and sense of physical awareness between the old and the new.

The old and new share a common ground, sitting comfortably shoulder to shoulder, as contemporaneous peers

IN USE: TALENTS & TENANCIES

TENANCY: Expatriate couple with kid



Urbanature- National University of Singapore Architecture Year 1 Exhibition

Alice in Asylum- Pop-up secret dinner and bar experience

Aligning - single artwork by local artist Tang Ling Nah





THE
LORONG 24A
SHOPHOUSE
SERIES

NO.17



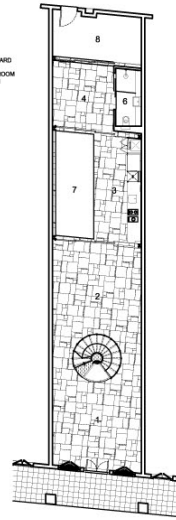
ZARCH COLLABORATIVES

FROM LEFT:

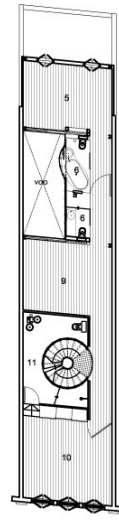
- 1 Plywood shelving spans across the entire length of the shophouse
- 2 Daylighting through skylights and voids
- 3 View from suspended mesh on 2nd storey
- 4 Plywood shelving spans horizontal and vertical length of house
- 5 Master bedroom suspended as a box



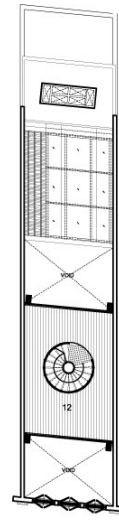
- 1. FOYER
- 2. LIVING
- 3. KITCHEN
- 4. DINING
- 5. BEDROOM
- 6. BATH
- 7. PORCH
- 8. REAR COURTYARD
- 9. FAMILY AREA
- 10. MASTER BEDROOM
- 11. MASTER BATH
- 12. ATTIC



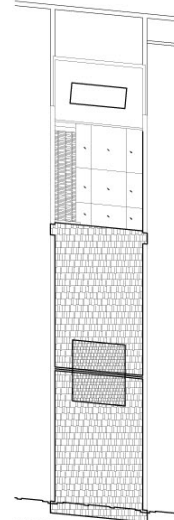
1ST STOREY



2ND STOREY

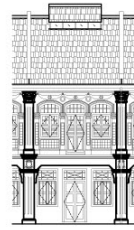


ATTIC

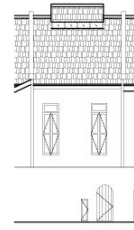


ROOF

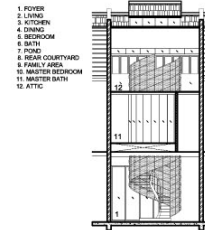
CONCEPT
A harmonious interplay of old and new.



FRONT ELEVATION

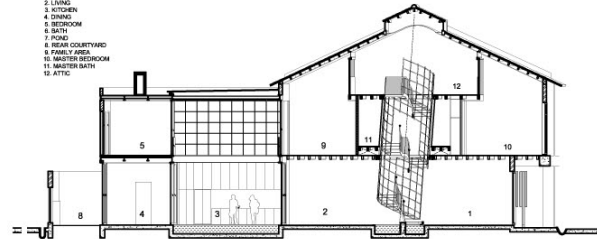


REAR ELEVATION



CROSS SECTION

- 1. FOYER
- 2. LIVING
- 3. KITCHEN
- 4. DINING
- 5. BEDROOM
- 6. BATH
- 7. PORCH
- 8. REAR COURTYARD
- 9. FAMILY AREA
- 10. MASTER BEDROOM
- 11. MASTER BATH
- 12. ATTIC



LONGITUDINAL SECTION

SECTION
A central spiral staircase was inserted into the main building, which created a vertical spine and subdivided the spaces that were required.

AWARDS
AND ACCOLADES



URA AHA Award (2011)



SIA Design Award (2012)



SITE PLAN

TENANCY: Expatriate couple



THE
LORONG 24A
SHOPHOUSE
SERIES

NO. 19



HYLA ARCHITECTS

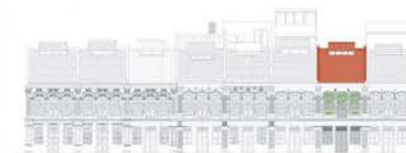
This project attempts to complement the simple honesty and unpretentious pragmatism that lies behind the elaborate decorative facade of the shophouse with a modern interpretation and intervention which has a raw, industrial and sculptural directness.

A restricted palette of steel, glass and aluminium is used with complementary tiles in different shades of grey. The result is dramatic, surprising, and free-spirited, which hopefully echoes the vibrancy and exuberance of the street life outside in Geylang.



THE LORONG 24A SHOPHOUSE SERIES

NO. 19



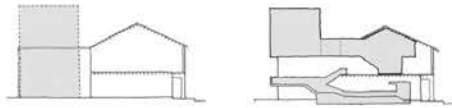
HYLA ARCHITECTS



FROM LEFT:

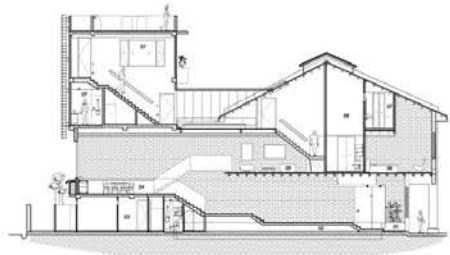
- 1 View of spiral staircase from front door.
- 2 Juxtaposition of spiral staircase at attic and the false ceiling design below the roof.
- 3 View from within the central spiral staircase at the 2nd storey landing.
- 4 View of central airwell.
- 5 Central airwell with a view of the water feature, screen wall at the second storey baths, as well as trellis over the airwell.
- 6 View into Bath 2 where bulge into the central airwell had been created.
- 7 View of Master Bathroom.

PLANS AND DRAWINGS



CONCEPT DIAGRAM

The conversation with the existing shophouse is intended to read the 'new' not as a 'rear extension' but as an 'insertion'.



SECTION A-A

Linearity of space is expressed through circulation of stairs and material.



MODELS

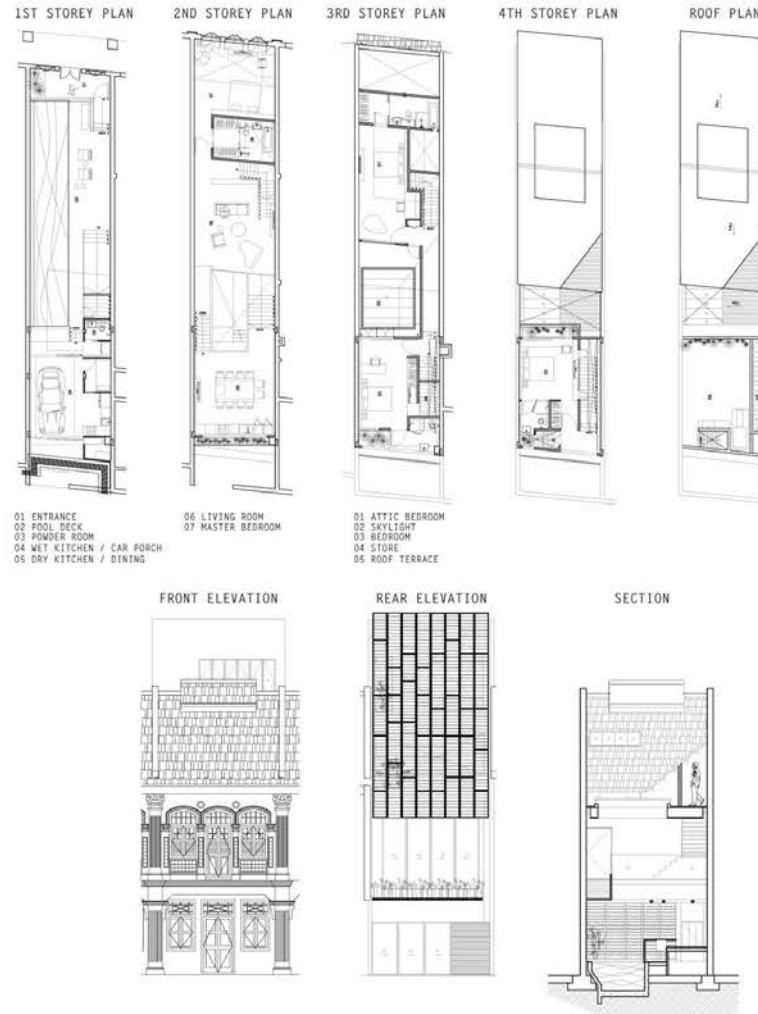
Exploration of spatial volume and the articulation of the new insertion.

IN USE: TALENTS & TENANCIES

TENANCY: Expatriate couple with kid

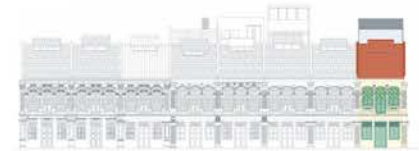


Occupations, NUS Architecture Yr2
2012 Singapore



THE
LORONG 24A
SHOPHOUSE
SERIES

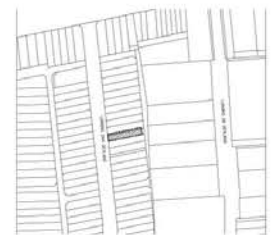
NO.21



KD ARCHITECTS WITH FARM

The conversation with the existing shophouse started with the intention to read the 'new' not as a 'rear extension' but as an 'insertion'. The monolithic lap pool on the first storey emphasizes the linear typology of the space, as it guides one's experience from the front to the rear. Extending this idea of linearity is the monolithic volume at the rear which houses the private quarters on the upper levels.

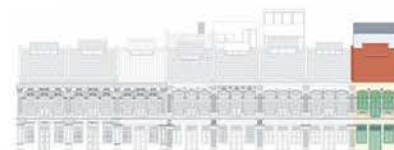
One experiences the continuity of space through a series of stairs that loop through the shophouse. Central to this continuous loop is the skylight that marks the vital interface. It bathes this narrow linear space with resplendent sunlight, and visually connects different parts of the house.



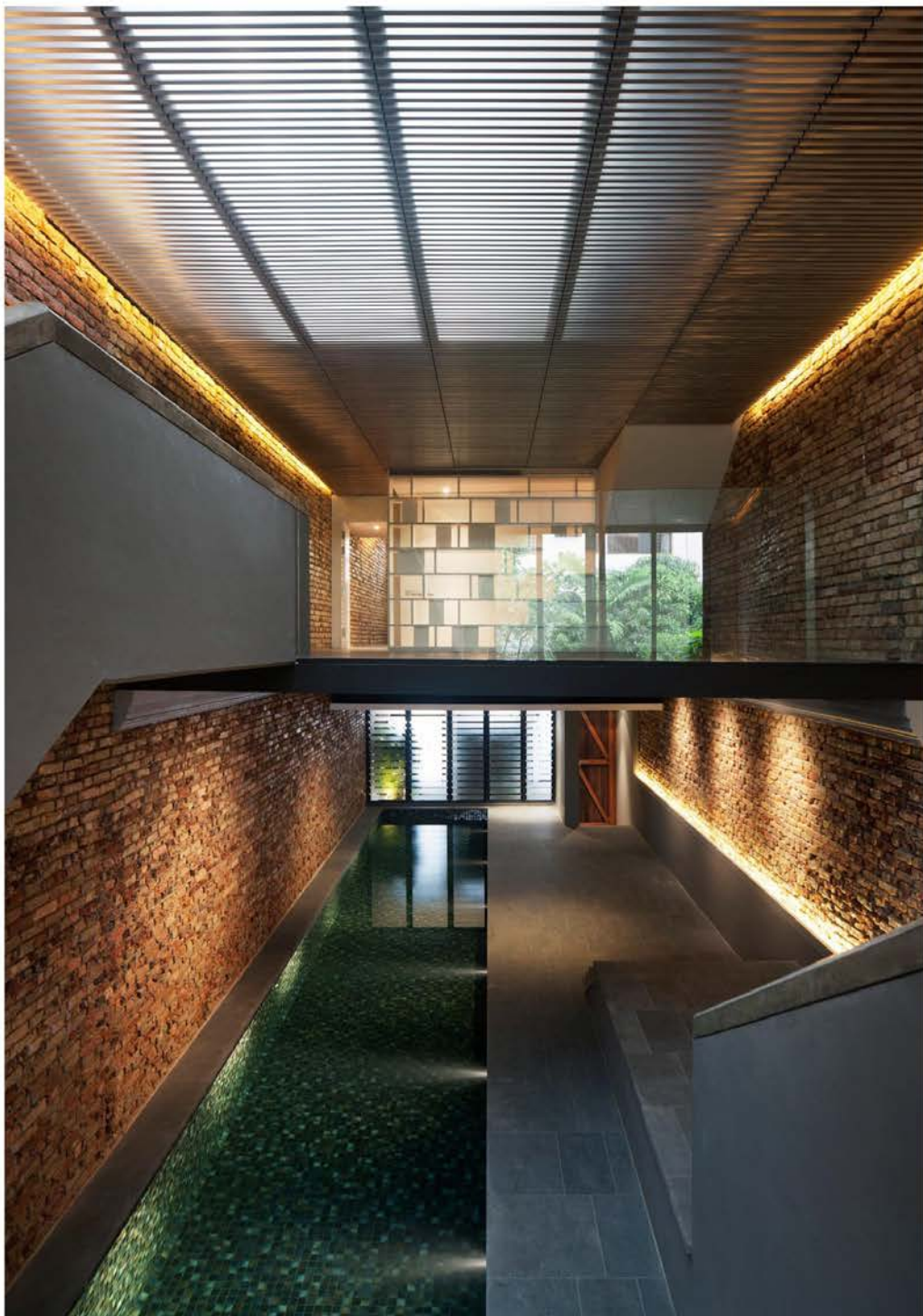


THE
LORONG 24A
SHOPHOUSE
SERIES

NO. 21



KD ARCHITECTS WITH FARM



FROM LEFT:

- 1 View from rear end of house
- 2 Master Bedroom
- 3 View from front of house
- 4 Day view of rear facade
- 5 Night view of rear facade